

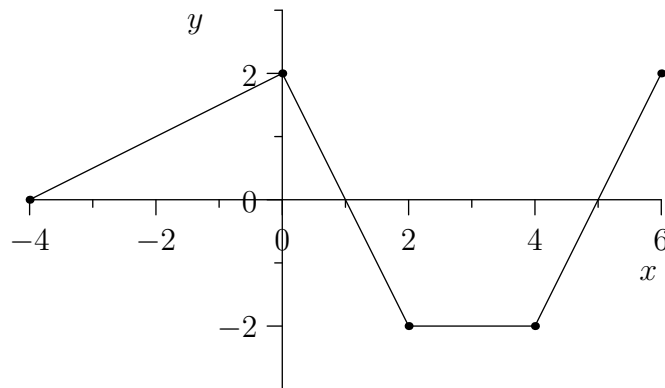
MTH 132.12 Quiz 3
Friday 11 February 2011

Name:

Show *all* your work. Points will be deducted for incomplete work.

1. Let $f(x) = \frac{x}{x+1}$. Use the definition of the derivative to compute $f'(2)$

2. The following is the graph of $y = g(x)$.



- (a) Where is g continuous?
- (b) Where is g differentiable?
- (c) Sketch the graph of $y = g'(x)$ on the axes below.

