

**EVEN ANSWERS TO HOMEWORK “TO FINISH BY
MARCH 24”**

Extra Problems:

1: (a) $\frac{2}{3}$ (b) $\frac{1}{3}$

2: (a) e^{-1} (b) $e^{-\frac{1}{2}}$

3: (a) $\frac{15}{56}$ (b) $\frac{69}{80}$

4: (a) $\frac{1}{6}$ (b) $\frac{1}{2}$

Chapter 3.2:

2: A graph is in the figure below. (a) $\frac{31}{48}$, (b) $\frac{9}{16}$, (c) $\frac{1}{3}(\frac{5}{3} + (\frac{1}{3})^4)$

3: A graph is given below. (c) $\frac{2}{27}$

4: A graph is given below. (a) $c = \frac{3}{7}$, (b) $\frac{37}{56}$

6 (Bonus): $f(0) = \frac{1}{64}$, $f(1) = \frac{8}{64}$, $f(2) = \frac{16}{64}$, $f(3) = \frac{24}{64}$, $f(4) = \frac{15}{64}$ and for all y not equal to 0, 1, 2, 3, 4, then $f(y) = 0$.

8: $c = 2$, $e^{-2} - e^{-4}$

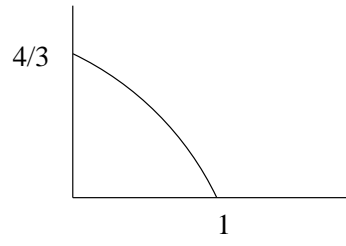
Chapter 4.1:

2: 50.5

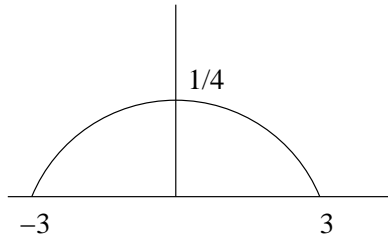
4: $\frac{30}{8}$

Chapter 5.9:

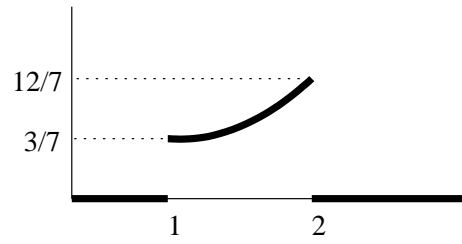
14: $1 - e^{-3}$



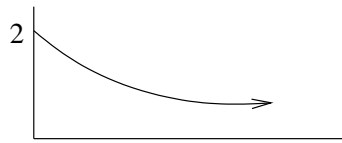
3.2.2



3.2.3



3.2.4



3.2.8