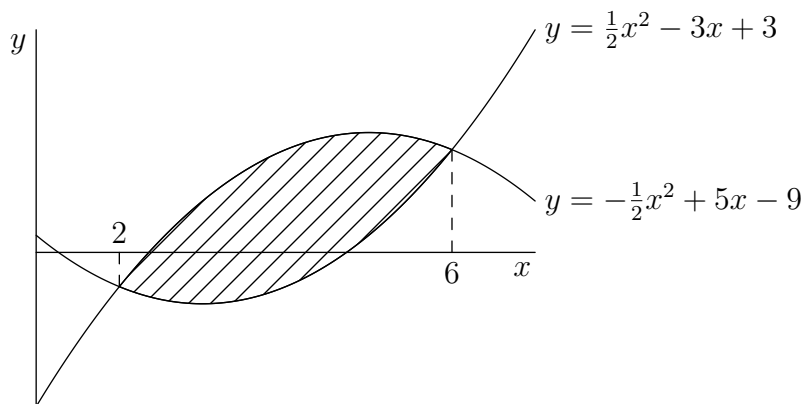


MTH 124.019 Quiz 6  
 Friday 19 March 2010

Name:

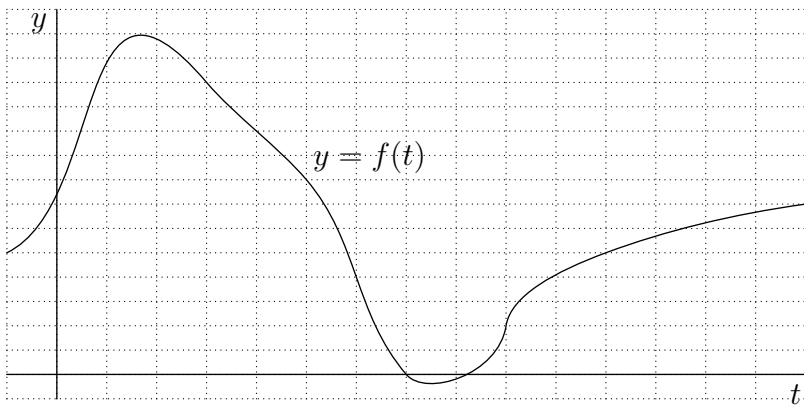
Show *all* your work. Points will be deducted for incomplete work. Write your answer in the box provided

1. Consider the following graph.



Write a single integral which represents the shaded area. The expression inside the integral sign should be simplified algebraically.

2. The following is the graph of  $f(t)$ . The gridlines are 1 unit apart.



- (a) Compute the *right hand Riemann sum* of  $f(t)$ , with  $n = 4$ , from  $t = 3$  to  $t = 11$ .

- (b) On the graph, draw the rectangles whose areas you computed for part (a).